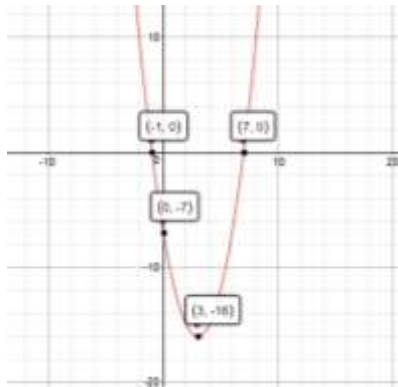


Math 1050 Final Exam Answer Key

Fall 2015

1. $a^3 + \frac{4}{3}b^2 + (\pi - 3)\sqrt{2} + \frac{2}{3}b^3$
2. $\frac{9z^7}{x^3}$
3. $2 - 8\sqrt{6}$
4. $\frac{13}{11}$
5. **No Solution**
6. $[-15, 11]$
7. Eric has 106 marbles, Kenny has 53 marbles and Stan has 39 marbles.
8. $D = \frac{AC}{2-A^2}$
9. $(2, \infty)$
10. a.) $\frac{1}{3}$ b.) $\frac{\sqrt{3+a}}{9-6a+a^2}$
11. $4x - 2h - 7$
12. $x = -1$
13. $y = -\frac{1}{2}x - 7$
14. The height of the antenna is $10\sqrt{2}$ ft.
15. $x \in \{-3 + i\sqrt{3}, -3 - i\sqrt{3}\}$
16. Vertex $(3, -16)$ opens up, y-intercept: $(0, -7)$, x-intercepts: $(-1, 0)$ and $(7, 0)$



17. $\frac{-x}{x+3}$

Math 1050 Final Exam Answer Key

Fall 2015

18. $x = 6$

19. $\{0\} \cup [4, \infty)$

20. $(2, 5]$

21. a.) Domain $(-\infty, 3) \cup (3, \infty)$

b.) Range $(-4, \infty)$

c.) $g(-3) = 0, g(4) = 0$

d.) $g(0) = -2$

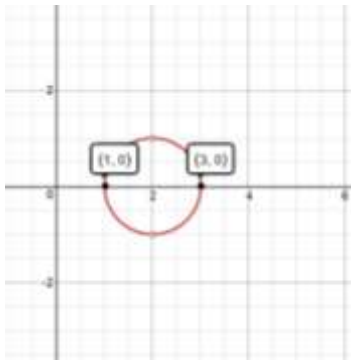
22. $t = 81$

23. a.) 2 b.) $\frac{1}{2}$ c.) -3

24. a.) -0.5 b.) 3.6 c.) 1.7

25. $x = -1$

26. Circle with center $(2, 0)$ $r = 1$



27. $-\sqrt{2} < \sin(6.2) < \tan(3\pi) < \cos(6.2)$

28. a.) $\frac{\pi^2}{60}$ radians b.) $\frac{1800^\circ}{\pi}$

29. a.) $\frac{2\sqrt{6}}{7}$ b.) $\frac{2\sqrt{6}}{5}$

30. During the first 10 miles, Lila drove 40 mph.