



A PUBLICATION DESIGNED TO EDUCATE AND ILLUMINATE

The Geologic Times

A Publication for Geology and
Environmental Science Students

Fall Semester 2014

IN THIS ISSUE

Introducing, The Geologic Times!

The department of Geology, in tandem with the Environmental Science program at Wayne State University is proud to introduce, *The Geologic Times!*

This publication is designed to share important information about these degree programs, the College of Liberal Arts and Sciences, and Wayne State University.

This newsletter is published solely for current and prospective students in the Department of Geology and the Environmental Science program.

Tentatively scheduled to be released once per semester, this newsletter will ideally serve as an important source of information relating to campus resources, promoting information about upcoming events, highlighting strategies for personal and academic success, and exploring career and graduate study opportunities among others.

Certainly, this newsletter will most likely evolve overtime, however you can expect this publication to continue to be a principal source of information pertaining to student success within the Department here at Wayne State University.

Moreover, we would love our readers to take an active approach in their participation with this newsletter. Anyone who has recommendations to improve this newsletter, or if you would like to have an article added to the next one, is encouraged to contact Cody Bailey. Here is his current contact information:

1369 Biological Sciences Bldg.

Detroit, MI 48202

(313) 577-2295

bailey.cody@gmail.com

We look forward to serving you – now, please enjoy what we have in store for you in the Fall 2014 edition.



Introducing Your New Advisor

In May, the Department of Geology, along with the Environmental Science Program, hired recent graduate Cody Bailey for the position of Academic Advisor.

Read more on page 2



10 Ways to Succeed at WSU

As we begin a new semester, maximizing productivity will be important for academic success. One of the biggest issues students face in the fight to maximize productivity is limiting distractions.

Read more on page 4

Academic Success Center Workshop Series



The mission of the Academic Success Center (ASC) is to ensure that all Wayne State University students become self-determined, motivated and independent learners.

Each semester, the Academic Success Center offers workshops which cover topics such as time management, test preparation, textbook reading, concentration, and memory improvement. The workshops are free and open to all One Card holders.

For Fall 2014, all workshops will be held in **Lab A**- first floor of the Undergraduate Library.

Please register online by clicking on the workshop title to reserve your space, as seating is limited. A reminder email will be sent the morning of the workshop to those who have electronically registered. Workshops typically last for approximately 50-60 minutes unless otherwise noted.

For questions, please contact Angela Sickler at (313) 577-4195 or au1072@wayne.edu.

If you're unable to attend a particular workshop, or prefer a one-on-one approach, please consider utilizing our individualized [Study Skills Counseling](#) services.

WORKSHOP LINE-UP

For a printable copy of the Fall 2014 line-up, click [here](#).

ACADEMIC SUCCESS CENTER
David Adamany Undergraduate Library
Suite 1600

Introducing Your New Advisor



Cody graduated in May with a Master's degree in Educational Leadership along with a Graduate Certificate in Academic Advising.

In May, the Department of Geology, along with the Environmental Science Program, hired recent graduate, Cody Bailey for the position of Academic Advisor.

Cody most recently received his Master of Arts degree in Educational Leadership from Eastern Michigan University, along with a Graduate Certificate in Academic Advising in April 2014.

Cody received his undergraduate degree at Michigan State University, a Psychology B.A., in 2011. He also completed coursework for an additional major in Criminal Justice.

Prior to enrolling at Eastern, Cody worked for the Michigan College Access Network (MCAN) at Ionia High School on the state's west side. His primary responsibility there was helping high school students make the transition from high school to college.

Cody is now excited to join our team at Wayne State University and looks forward to meeting the students in the program. This fall, he will be located at 1369 Biological Sciences building. If you are looking for information related to your degree progress, remaining requirements, campus resources or more, Cody will be a great resource for you to work with!

Save the Date!

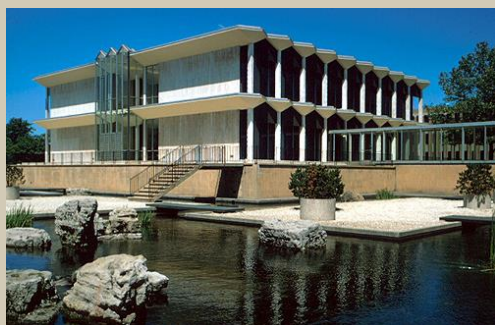
Event: The 3rd Annual Biology, Geology, and Environmental Science Career Fair

When: Thursday, October 28, 2014 from 9:30am-3:00pm

Where: McGregor Memorial Conference Center

FOR MORE INFORMATION CONTACT

Rebecca Russell,
Academic Advisor for Biological Sciences
(313) 577-2296
rrussell@wayne.edu



McGregor Memorial Conference Center

“Environmental scientists need at least a bachelor’s degree”

Career Highlight: Environmental Scientist

WHAT ENVIRONMENTAL SCIENTISTS DO

Environmental scientists and specialists use their knowledge of the natural sciences to protect the environment and human health. They may clean up polluted areas, advise policy makers, or work with industry to reduce waste.

WORK ENVIRONMENT

Environmental scientists and specialists work in offices and laboratories. Some may spend time in the field gathering data and monitoring environmental conditions firsthand. Most environmental scientists and specialists work full time.

HOW TO BECOME AN ENVIRONMENTAL SCIENTIST

Environmental scientists and specialists need at least a bachelor’s degree in a natural science or science-related field for most entry-level jobs.

PAY

The median annual wage for environmental scientists was \$63,570 in May 2012.

JOB OUTLOOK

Employment of environmental scientists and specialists is projected to grow 15 percent from 2012 to 2022, faster than the average for all occupations. Heightened

public interest in the hazards facing the environment, as well as the increasing demands placed on the environment by population growth, is expected to spur demand for environmental scientists and specialists.

SIMILAR OCCUPATIONS

- Agriculture and Food Scientists
- Anthropologists and Archeologists
- Environmental Engineers
- Hydrologists
- Microbiologists
- Occupational Health and Safety Specialists
- Postsecondary Teachers
- Zoologists

MORE CAREER INFORMATION

For more information about environmental scientists and specialists, including training, visit:

[American Geosciences Institute](#)

For information about environmental health specialists and related occupations, visit:

[National Environmental Health Association](#)

Attention Prospective Graduates

The degree application deadline for FALL 2014 is:

FRIDAY, SEPTEMBER 26, 2014
(\$40.00 application fee)

If you will be completing your degree requirements* by the end of December 2014 you must apply online through pipeline.wayne.edu by the September 26th deadline!

The system is currently open for Fall Term 2014 Applications

The College of Liberal Arts and Sciences will not accept late applications. If you miss the deadline you must apply for the next term, Winter 2015.



10 Ways to Succeed at Wayne State University

The Academic Success Center, located in the Undergraduate Library (UGL) has developed 10 success tips for new and continuing students to be successful.

1. GO TO CLASS AND PARTICIPATE

Professors test on what is discussed in class as well as grade for attendance and participation. Don't abuse your new freedom. Being at class should be your number one priority.

2. FIND AND GET TO KNOW ONE INDIVIDUAL ON CAMPUS WHO KNOWS AND CARES ABOUT YOUR SUCCESS

Try your advisor, a student, a professor, an organization sponsor, or a learning specialist.

3. THINK ABOUT WHY YOU ARE IN COLLEGE

Your college experience will be much more productive if you can identify specific goals you wish to accomplish.

4. SET UP A DAILY AND WEEKLY SCHEDULE, AND STICK TO THEM!

Make a semester schedule of all the major test dates, assignments, and other important activities you have to attend. Remember to include personal and social commitments as well!

5. ASSESS AND IMPROVE YOUR STUDY HABITS

Attend Academic Success Center Workshops, discussed later in this Newsletter!

6. ENCOURAGE TEACHERS TO INVOLVE YOU IN THE LEARNING PROCESS

Attend classes, actively participate, and take advantage of office hours and appointments to meet with your professors individually.

7. KNOW HOW TO USE THE CAMPUS LIBRARIES!

Often, these are the best places to study on campus!

8. DEVELOP CRITICAL THINKING SKILLS

Challenge yourself to understand the "why" of the material. Why is this important? Why is this believable?

9. LEARN TO BE ASSERTIVE

Your grades, major, and career plans depend on your initiative. Don't fear the first step.

10. TAKE YOUR HEALTH SERIOUSLY

How much sleep you get, what you eat, whether you exercise, and the kinds of decisions you make about drugs, alcohol and sex all contribute to how you feel. Get in the habit of being good to yourself.

BONUS: DEVELOP A SENSE OF SELF-AUTHORSHIP

Baxter Magolda define self-authorship as, "more than a skill; it is a way of making meaning of one's experience." To make meaning of your academic experience you have to be actively engaged in the learning process. Several of these tips are designed to help you do just that. Utilize this list as your prepare for the semester to maximize your productivity.

AROUND CAMPUS



Tuition Break Program

Wayne State University has announced a tuition discount program that cuts undergraduate tuition by 30 percent for the 2015 spring and summer semester courses. To be eligible for the Spring/Summer Tuition Break program, students must complete a total of 24 credits during the fall 2014 and winter 2015 semesters and carry a cumulative GPA of 2.5 or higher.



Knowledge on Tap Event

Wayne State's Knowledge on Tap speaker series is back with "Detroit's Lost Communities: A chat with the city's premier urban archaeologist." The event takes place at 5:30 p.m. on Wednesday, September 10 at Tony V's Tavern in Midtown. The presentation begins at 6 p.m.



Third Thursdays at Eastern Market

Food trucks, live bands, activities and much more! FREE shuttles provided from the Campus Activities Hub on Anthony Wayne Drive and University Towers starting at 5pm!

The Canadian Rockies: From Alberta to British Columbia

by Noor Soboh

The Geology Department at Wayne State University has adopted the tradition of providing their students with an abundance of opportunities to appreciate the heart of geology through experiences that come so far and few. Being new to the department I was nervous traveling to a different country with so many people that I wasn't familiar with. I have never been more wrong about anything in my life. The Geology Department consists of the most heart-warming people I have ever had the pleasure of meeting and I am thankful to call them my peers and mentors.

Throughout the exploration we put up our tents in various locations, moving campsites almost every night. Once we reached the Canadian Badlands I began to really appreciate the beauty of geology. Located right next to our campsite were fields of sage and miles of sedimentary structures and hoodoos all over the place. Guiding us through the badlands was a

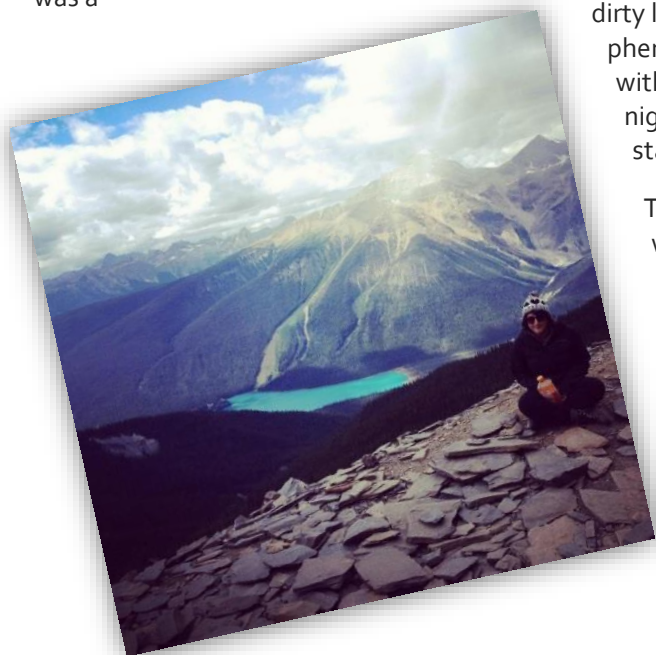


wonderful local geologist Katherine Boggs, who spent a part of the trip answering the questions we had, along with questions that we didn't know we had. The week that followed was filled with an overwhelming amount of information on things such as rocks, bones, minerals, geography, Native Americans, and trilobites. We visited Crowsnest Pass, Royal Tyrell Museum, a dinosaur excavation site, and the Rocky Mountain Trench. As our elevation increased along with our dirty laundry, the scenery was phenomenal. I will always keep with me the memories of the night sky filled so clearly with stars.

The last two days of the trip were my favorite, consisting of the Burgess Shale hike to Walcott Quarry with a total elevation of 7,500 feet and visiting the Athabasca Glacier. Our campsite was right in the mountains not far from a little town called Field that we visited on the last day for

a barbeque at the home of Randle Robertson, the executive director of the Geoscience Foundation, who spent a majority of the trip with us and became a part of our little geology family, as well as someone I will always remember and hold dear to my heart.

I was slow to say my goodbyes to Randle and Katherine and reluctant to leave the mountains but our trip unfortunately had come to an end. I appreciate the faculty of the Geology Department for being so great and presenting me with the opportunity to visit the Canadian Rockies, especially Larry Lemke. Through them I have become a part of an awesome little community that I didn't even know existed. And to the students of geology, I look forward to exploring the world with you.



GEOLOGY & ENVIRONMENTAL SCIENCE STUDENT ORGANIZATIONS

A Message from the President of the AIPG (American Institute of Professional Geologists)



Welcome back everyone, hope you had a good summer! Now that we're back in classes it is the perfect time to meet old friends and make new ones. The AIPG offers a free opportunity for Majors in Geology to network with your fellow peers as well as learn from the experience of upper classmen. AIPG membership also gives you access to seminars, networking contacts, and fun activities. This club is led by students for students, as such, members are encouraged to come to events and monthly meetings, and be as geeky as possible about Geology, Environmental Science, and Science in general.

Member meetings will be held every second Tuesday of the month beginning on September the 9th, 2014.

Hope to see you there,

Andrew Church

WSU chapter AIPG President

The Wayne State Geoscience Club

The Wayne State Geoscience Club is a group for geology and environmental science students to get together to further their experiences as students and community members. The GSC organizes fundraising events, informs members of volunteer opportunities and of local geoscience related events. Members have participated at the Greater Detroit Gem, Mineral, Fossil and Jewelry Show (October 10-12, 2014), the Prospectors and Developers Association of Canada's annual convention (March 1-4, 2015) and in various local clean-up projects.

In addition to small field trips, such as last falls' trip to Hocking Hills, the GSC gives financial support to the annual departmental field trip in an effort to help make it affordable to all students. Members also receive information about scholarships and possible career paths. You don't have to decide on a major yet; our club is open to all students with a love of the earth and the outdoors!

Considering Graduate School?

If so, why not start by considering an option right here at Wayne State University? The Master of Science with a major in Geology consists of advanced studies that are designed to prepare the student to assume a position of responsibility as a professional geologist; or to enter a program leading to the doctor of philosophy in geology or a related discipline at another university.

The Master of Science in geology is designed to provide students with special training in the environmental aspects of this discipline in keeping with the urban setting of Wayne State University. Students receiving the degree of Master of Science in geology will be especially prepared to work in a capacity that deals with or provides solutions to environmental problems in which an intimate relationship between the environment and earth science is an important factor.

The master's degree program involves the rigorous, in-depth study of major concepts pertaining to the earth, and the techniques used to study them. Entrance into the program assumes a firm foundation in the basic and elemental concepts of geology.

How to Apply

An online application, instructions, and answers to FAQs and helpful advice for preparing your graduate application materials can be found at the WSU Graduate Admissions Office website: gradschool.wayne.edu/future.

The Graduate Admissions Process

Depending on the time of year, the graduate admissions process can take as long as ten to twelve weeks, and sometimes longer in the Office of Graduate Admissions, it is processed and entered into the university database. Shortly thereafter, your credentials will be collated, reviewed for eligibility and completeness, and forwarded to the Geology Department.

The Geology Faculty will review your application and our Graduate Program Director will return the Department's recommendation to either admit or deny your application to the Office of Graduate Admissions. Official notification of the decision will be provided to you by the Office of Graduate Admissions. Your admission would be for a specific term only; if you were not to enroll during the term you were

admitted, you would need to complete a Graduate Re-Application.

Requirements

Applicants should include the following items:

- A personal statement explaining your goals and motivations for pursuing an M.S. degree
- A current resume
- Official transcripts from all post-secondary institutions attended
- GRE scores are strongly recommended
- TOEFL scores are required for international student

Application Deadlines

Spring/Summer (term begins in May) – apply by March 15

Fall (begins September) – apply by July 1

Winter (begins in January) – apply by November 1

Note: Application deadlines for international students are earlier. Please check Graduate Admissions for more details:

gradadmissions.wayne.edu/process.php

Application Fee

Wayne State University does not require an application fee.

Departmental Contact Information

Dr. Sarah Brownlee

WSU Department of Geology

0224 Old Main, 4841 Cass Ave.

Detroit, MI 48202

sarah.brownlee@wayne.edu



Know Your Campus Resources!

Did you know being a student at Wayne State University came with an abundance of student resources? How about that many of these resources were covered by the cost of student tuition? What does this mean for you – many of these resources are **FREE** for students! How many have you utilized?

- [Learning communities](#)
- [Pre-Med and Health Science Center](#)
- [Study skills counseling](#)
- [Supplemental instruction](#)
- [Tutoring](#)
- [Writing Center](#)
- [Degree and enrollment verification](#)
- [Degree Audit \(STARS\)](#)
- [Transcript requests](#)
- [Transfer credit](#)
- [Campus Health Center](#)
- [Career Services](#)
- [Counseling and Psychological Services \(CAPS\)](#)
- [Dean of Students Office](#)
- [Extension centers](#)
- [Libraries](#)
- [Ombudsman](#)
- [Student organizations](#)
- [Parking](#)
- [Sign up for text message alerts](#)
- [Study Abroad & Global Programs](#)
- [Community outreach](#)
- [Explore our city](#)
- [Recreation and fitness center](#)
- [Financial aid](#)
- [Student activities calendar](#)

We Want Your Opinion

We want your opinion! Have an idea to add to The Geologic Times? Let us know! Here are some ideas to get you started:

- Tell us about a great educational experience
- Blog about your field trips
- Nominate a faculty member for a Biography piece
- Anything else about Geology or Environmental Science that interests you!

Share your thoughts and ideas with your Academic Advisor, Cody Bailey. He can be contacted by:

Email: fs3981@wayne.edu

Phone: (313) 577-2295

In Person: 1369 Biological Science Building

Wayne State University, Main Campus

